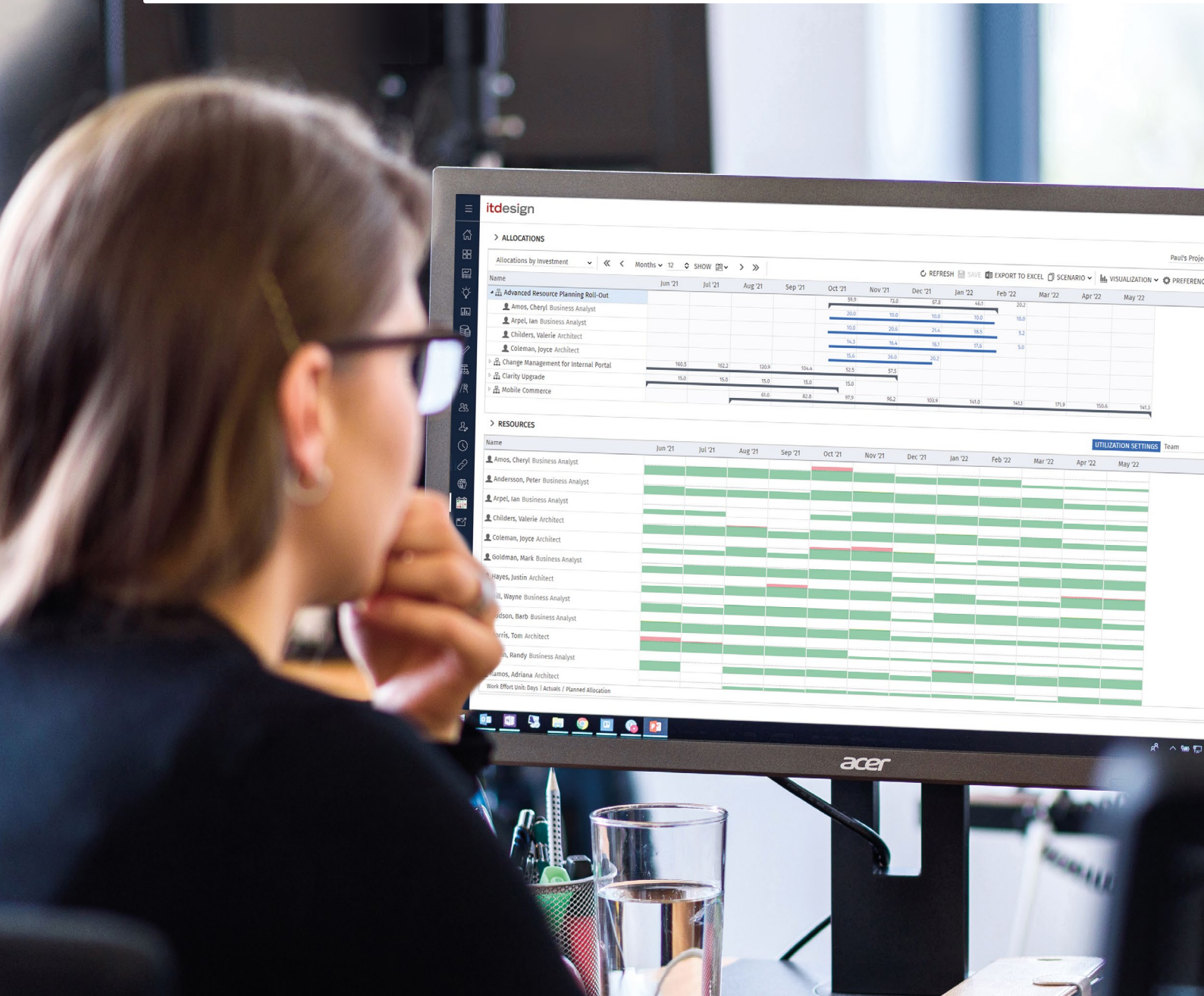


itd Advanced Resource Planning

**The Most Powerful Tool for
Professional Resource Planning in Clarity**



Unique Features for Your Success



Allocation and assignment
processing for projects



Real-time resource utilization
at a glance across all projects



Graphical display of bottlenecks



Drag & Drop
functionality



Extensive configurable
filter options



Scenario planning
for allocations



Move entire project phases
with a click of the mouse



Gantt chart



Excel data exports

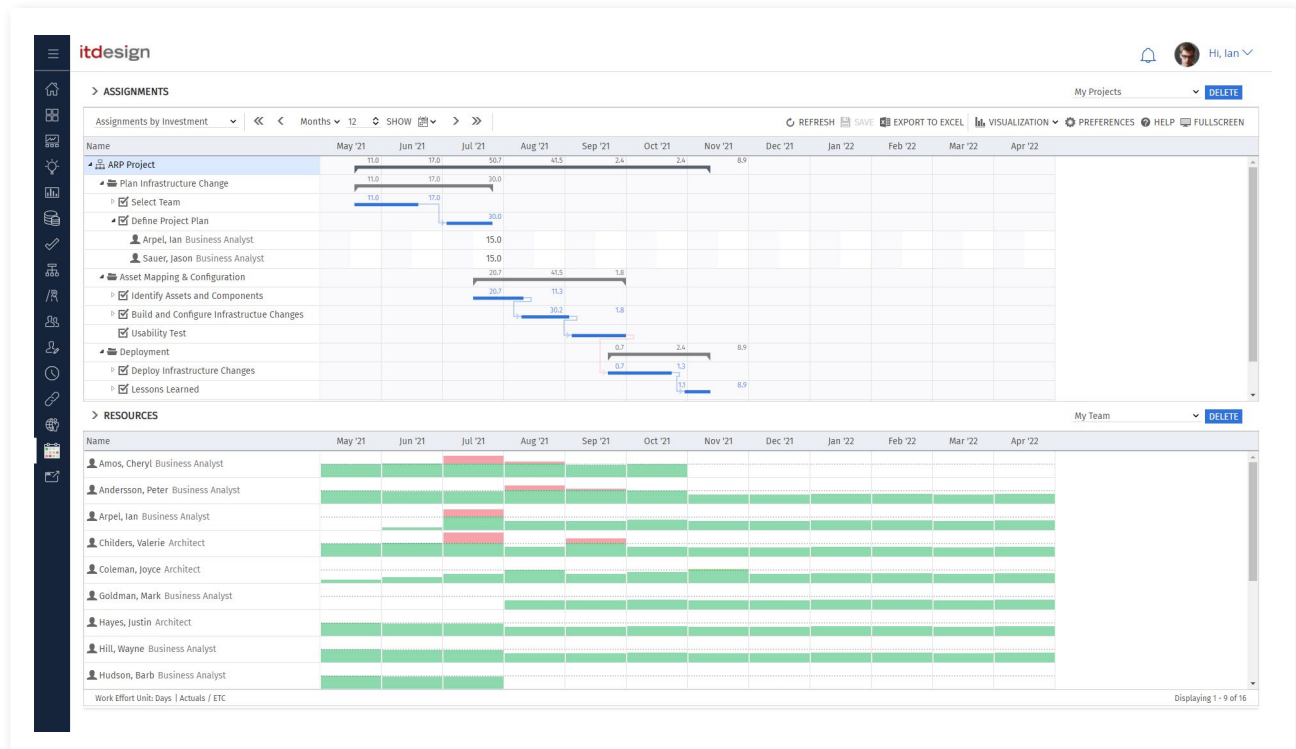
Your Advantage

- Professional yet simple resource planning in Clarity
- All data in one single view for maximum transparency and efficiency
- Instant feedback when editing allocations and assignments
- Overview of resource capacity and utilization in real time
- Realistic and reliable planning leads to more motivated employees

Advantages for Project Managers

As a project manager you can immediately see in itd Advanced Resource Planning whether your resource planning is realistic and reliable. The editing of entire phases or individual tasks can be done directly in the tool.

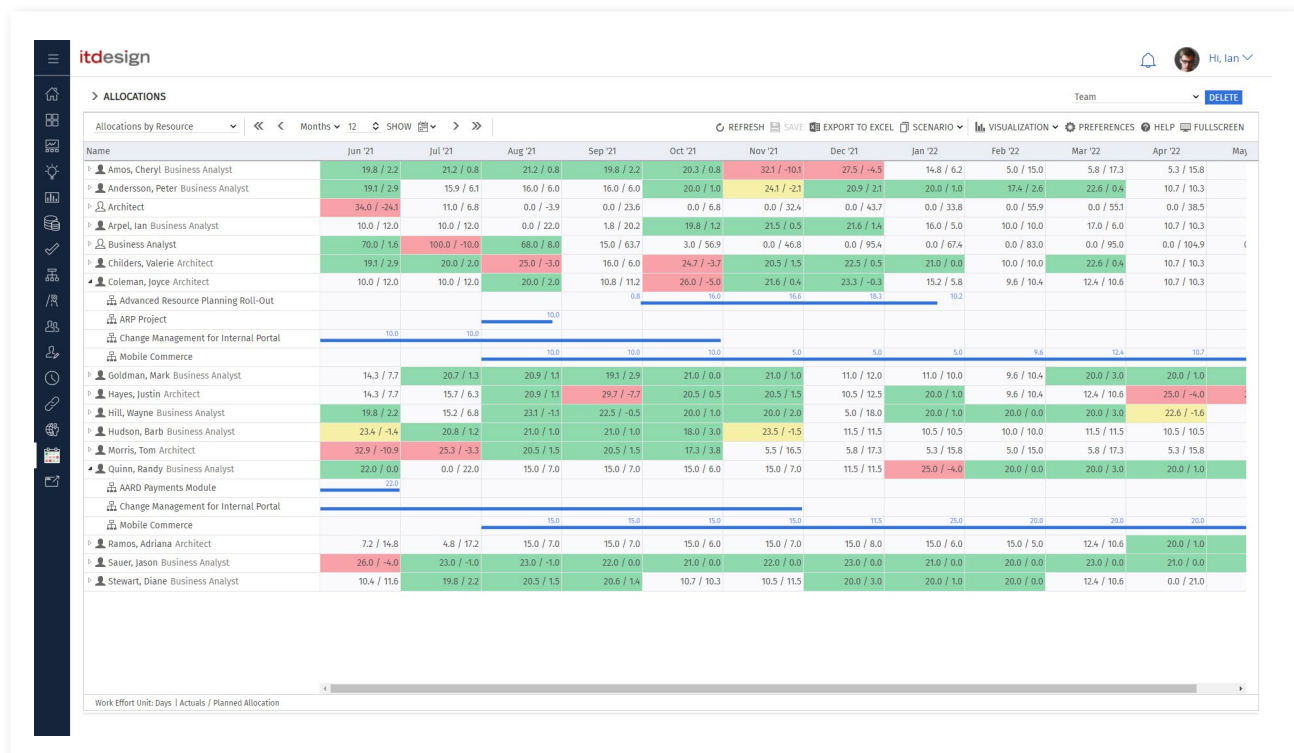
Within one view, assignments for one or more projects can also be edited. When you move tasks, you get real-time visual feedback to see where bottlenecks or overloads occur.



All data in one single view for maximum transparency and efficiency

Advantages for Resource Managers

As a resource manager, itd Advanced Resource Planning gives you an overview of your team members' workload across all investments and projects – in just one view! This allows you to set priorities and balance your planning in a meaningful way. Within the tool, you can edit investments or project assignments and allocations, ensuring your resources are optimized.



Overview of resource capacity and utilization in real time

itd Advanced Resource Planning at SGL Carbon

Efficient and Transparent Resource Planning in International Project Business

SGL Carbon is a technology-based company that specializes in the development and manufacturing of carbon-based solutions. With more than 30 production sites in Europe, North America and Asia, SGL Carbon is a global leader in their industry. For employees working on strategy, technology and customer projects, optimal resource allocation is a key success factor.

SGL Carbon at a glance

- Specialty chemicals
 - 4,800 employees
 - Clarity & itd Advanced Resource Planning
-



Challenge

SGL Carbon has been using Clarity for project and portfolio management since 2017. Previously, the company used a complex Excel solution for resource planning. However, due to the wealth of information and the associated complexity, this solution reached the limits of its usability, so that meaningful, reliable and efficient planning was no longer possible.



Solution

By using itd Advanced Resource Planning, the planning and coordination of resources at SGL Carbon GmbH are significantly more transparent, simple and efficient. Resource and project managers can now carry out realistic planning right from the start, taking into account all project activities. Every outcome triggered by a change in a plan is immediately recognizable so that bottlenecks can be detected early and avoided.

Outcome

Now, SGL Carbon's employees have the benefit of increased planning accuracy and save valuable time during the planning process. With the help of itd Advanced Resource Planning, a common platform was created for all departments and functions involved. This platform enables SGL Carbon to carry out holistic project planning on the basis of transparent and accessible resource planning.



„With itd Advanced Resource Planning, we were able to create a more efficient and transparent resource planning for global customer projects in Clarity PPM. We are therefore absolutely satisfied.“

Christoph Koch · Director Global Project Management and Instrumentation & Control · SGL Carbon GmbH

More Information

Website

Visit our website via advanced-resource-planning.com and get all information and resources at a glance.

[↗ Visit our website](#)

Trainings

Our coaches show you how to use itd Advanced Resource Planning for simple yet realistic resource planning.

[↗ More on our trainings](#)

Video Tutorials

Get to know our YouTube video series and learn the tips on how to best use itd Advanced Resource Planning.

[↗ Watch our tutorials](#)

Manuals

Use our administrator and user manuals to find helpful information on using the Clarity add-on.

[↗ Find all manuals](#)

Release Notes

Find all relevant information about the latest versions of itd Advanced Resource Planning in the release notes.

[↗ Go to release notes](#)

FAQs

Check out our answers to the frequently asked questions about itd Advanced Resource Planning in our collection of FAQs.

[↗ Go to collection of FAQs](#)

itdesign Is Your Clarity Partner



Nora Schlipfenbacher

Account Manager PPM

Tel.: +49 7071 3667-60

ppm.itdesign.de/en

I look forward
to your message!

➤ ppm@itdesign.de

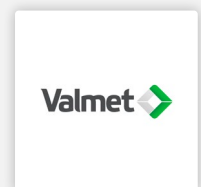
Our Services

Everything under One Roof for Your Clarity

With itdesign, you will receive a complete package of long-term expertise, outstanding service, and a real partner you can rely on. We stand by our customers and assist them throughout the entire process with Clarity – from tool selection and implementation to hosting, application management, and support. In addition to technical implementation, you benefit from our best practices and professional know-how.

Selected References

These Customers Also Have Achieved Success with Clarity and itdesign



itdesign GmbH
Friedrichstraße 12
72072 Tübingen
Germany

